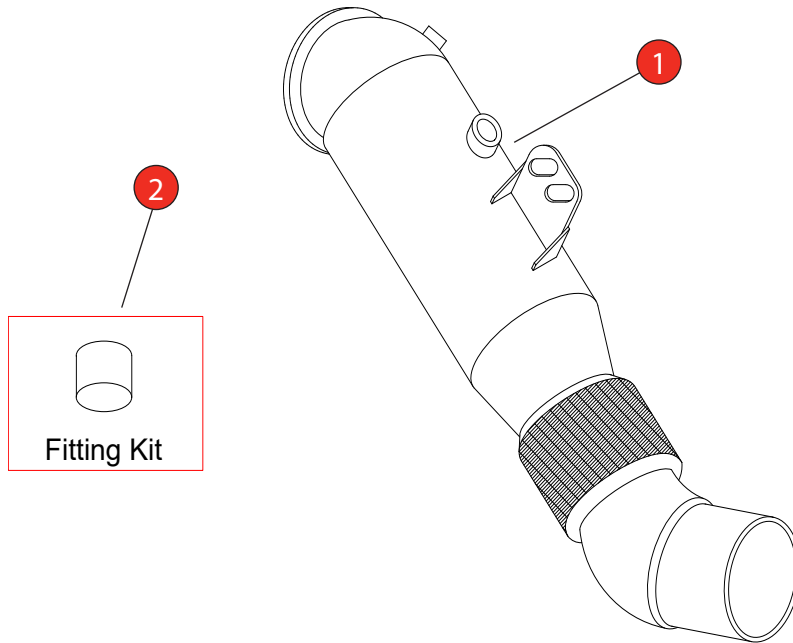


<b>Car</b>	Toyota Supra A90 3.0T Non GPF (ROW)	<b>Part No.</b>	STYX012
<b>Year</b>	2019-2025	<b>Fit Kits</b>	386FK
<b>Notes</b>	Where not supplied use original fittings Vacuum blanking cap supplied for GPF models	<b>Features</b>	Pipe Diameter:- 125mm

Estimated Fitting Time: 1 Hour

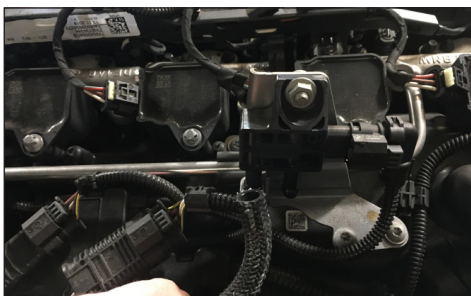


NO.	PART NO.	DESCRIPTION	QTY	CLASSIFICATION	Motorsport Use Only
1	938BM	Sports Cat Downpipe	1	HOMOLOGATED	No
<b>Fit Kit</b>					
2	386FK	Black Silicone Vacuum Blanking Cap - 8mm	1	DATE	10/01/2025
				ISSUE	01
				AUTHORISED	G O'Shea

**NOTE:** ENSURE SCORPION SYSTEM IS CLEAR OF MOVING PARTS AND ALL ORIGINAL FUNCTIONS WORK CORRECTLY.

<b>Car</b>	Toyota Supra A90 3.0T Non GPF (ROW)	<b>Part No.</b>	STYX012
<b>Year</b>	2019-2025	<b>Fit Kits</b>	386FK
<b>Notes</b>	Where not supplied use original fittings Vacuum blanking cap supplied for GPF models	<b>Features</b>	Pipe Diameter:- 125mm

Estimated Fitting Time: 1 Hour 30



**Blanking Cap Instructions  
(GPF models only):**

Locate the vacuum line running between the downpipe and the pressure sensor on the engine.

Remove the vacuum line from the sensor.

Push the blanking cap onto the sensor port that the vacuum pipe was on.



**Gasket:**  
Remove the gasket from the original downpipe and re-install on the Scorpion downpipe